

RESEARCH ARTICLE

Open Access

Evaluating the anti *Mycobacterium tuberculosis* activity of *Alpinia galanga* (L.) Willd. axenically under reducing oxygen conditions and in intracellular assays

Pooja Gupta¹, Purva Bhatte¹, Desiree D'souza¹, Monica Tolani¹, Poonam Daswani¹, Pundarikakshudu Tetali² and Tannaz Birdi^{1*}

Abstract

Background: In tuberculosis (TB), the steadily increasing bacterial resistance to existing drugs and latent TB continue to be major concerns. A combination of conventional drugs and plant derived therapeutics can serve to expand the antimicrobial spectrum, prevent the emergence of drug resistant mutants and minimize toxicity. *Alpinia galanga*, used in various traditional medicines, possesses broad spectrum antibacterial properties. The study was undertaken to assess the antimycobacterial potential of *A. galanga* in axenic (under aerobic and anaerobic conditions) and intracellular assays.

Methods: Phytochemical analysis was done using HPTLC. The acetone, aqueous and ethanolic extracts (1, 10, 25, 50 and 100 µg/ml) of *A. galanga* were tested axenically using Microplate Alamar Blue Assay (MABA) against *Mycobacterium tuberculosis* (M.tb) H37Rv and three drug sensitive and three multi drug resistant clinical isolates. The activity of the extracts was also evaluated intracellularly in A549 cell line against these strains. The extracts active under intracellular conditions were further tested in an axenic setup under reducing oxygen concentrations using only H37Rv.

Results: 1' acetoxychavicol acetate, the reference standard used, was present in all the three extracts. The acetone and ethanolic extracts were active in axenic (aerobic and anaerobic) and intracellular assays. The aqueous extract did not demonstrate activity under the defined assay parameters.

Conclusion: *A. galanga* exhibits anti M.tb activity with multiple modes of action. Since the activity of the extracts was observed under reducing oxygen concentrations, it may be effective in treating the dormant and non-replicating bacteria of latent TB. Though the hypothesis needs further testing, *A. galanga* being a regular dietary component may be utilized in combination with the conventional TB therapy for enhanced efficacy.

Keywords: *Mycobacterium tuberculosis*, Medicinal plants, *Alpinia galanga*, Anaerobic assay, Intracellular assays

Background

Tuberculosis (TB) is an infectious bacterial disease caused by *Mycobacterium tuberculosis* (M.tb). It commonly affects the lungs but may also affect other parts of the body viz., the brain, spine and the kidneys. Not every individual infected with M.tb presents with symptoms, referred to as latent TB (LTBI). As a result, two TB-related conditions

exist: active TB disease and latent TB infection (LTBI) [1]. Whilst individuals with LTBI are asymptomatic and non infectious, they are at a risk of progression to active disease. In LTBI, due to quantitative metabolic shutdown, the dormant bacilli fail to respond to drug therapies which target multiplying bacteria. Thus identification and treatment of LTBI is equally important to ensure complete elimination of TB.

The steadily increasing bacterial resistance to existing drugs is a serious problem [2,3], resulting in the urgent need for development of new TB drugs and shorter treatment

* Correspondence: fmr@fmrindia.org

¹The Foundation for Medical Research, 84-A, R.G. Thadani Marg, Worli, Mumbai 400018, Maharashtra, India

Full list of author information is available at the end of the article

regimens. This has led to the search for new classes of antimicrobial agents. Unlike synthetic drugs, antimicrobials of plant origin are found to exhibit fewer side effects and have the therapeutic potential to treat many infectious diseases [4,5]. Development of easier, rapid and safer screening techniques has intensified the search of chemical entities from botanicals and other natural resources for activity against *Mycobacteria* species [6]. *In vitro* inhibitory activity of crude extracts and/or pure active compounds extracted from plants against *M.tb* and its related species has been extensively reported [7-10].

Alpinia galangal (L.) Willd., family Zingiberaceae commonly referred to as galangal, is widely cultivated in South-east Asian countries such as Philippines, Indonesia, Thailand, India, and China [11]. It is extensively used in diets as well as in the traditional systems of medicine viz., Thai, Ayurveda, Unani and Chinese folk medicine [12]. Galangal has been known for its use as anti-inflammatory, antipyretic, emmenagogue, carminative, abortifacient and aphrodisiac and is used in the treatment of various diseases such as renal calculus, diabetes, heart diseases, bronchitis, rheumatism, chronic enteritis and kidney disorders [12,13]. Among other components, it is reported to contain tannins, glycosides, essential oils, phenol, carbohydrates and monoterpenes. Antimicrobial activity of galangal [13] and the *Alpinia* species [14] has also been reported earlier. Additionally 1' acetoxychavicol acetate, a phenylpropanoid, isolated from *A. galanga* and *A. nigra* is specifically known to possess antituberculous activity [14]. Crude extract of *A. galanga* has been demonstrated to have an activity similar to that of isoniazid [15]. However, Soundhari and Rajarajan [16] have demonstrated the activity of galangal in isoniazid resistant clinical strains *in vitro*. The possible reason for this discrepancy needs to be elucidated. Phongpaichit et al. evaluated the antimycobacterial activity of extracts from galangal and suggested its use as self-medication for treatment of TB in AIDS patients in Thailand [14]. Although there are reports of activity of *A. galanga* on axenic aerobic growth of *M.tb*, to our knowledge, there are no studies reporting its activity against *M.tb* under intracellular conditions and reduced oxygen concentrations. It is important that the antimycobacterial activity of plants be measured under hypoxic conditions since it is a model for non replicating and dormant bacilli. Besides, the intracellular environment in which the TB bacterium resides is anaerobic and is characterized by the switch from aerobic/microaerophilic to anaerobic respiratory pathways by utilisation of lipids as a carbon source [17].

Methods

Plant material

Alpinia galanga was selected for the present study on the basis of its broad antibacterial properties [11,12].

The plant was sourced from Kerala Agricultural University and cultivated at Naoroji Godrej Centre for Plant Research (NGCPR). The plant material was authenticated by Dr. P. Tetali, a taxonomist at NGCPR. A voucher specimen of the plant has been deposited at Botanical Survey of India (BSI), Western Center, Pune, India, under the herbarium number 131745.

Extract preparation

Coarsely powdered plant material (rhizomes) was sequentially extracted [18] with acetone, ethanol and distilled water using the Soxhlet apparatus. 300 ml of respective solvent was continuously refluxed with 25 g of plant material for a period of 24-30 hours for efficient extraction of the phytoconstituents. Post ethanol extraction and evaporation of the solvent, the aqueous extract was prepared by boiling the plant material until the volume of water was reduced to 25%. The aqueous extract was lyophilized (Thermo Fisher Scientific, USA) and the acetone and ethanolic extracts were allowed to air dry. The percent yields of the acetone, aqueous and ethanolic extracts were 2.92, 23.6 and 6.84 (w/w) respectively. For the assays, the extracts were reconstituted at 20 mg/ml concentration in dimethyl sulfoxide (DMSO, SD fine Chemicals, India), filtered through 0.2 μ m, 25 mm DMSO resistant Acrodisc syringe filters (Pall Corporation, USA) and stored at -20°C for up to 2 weeks.

Phytochemistry

The extracts of *A. galanga* were subjected to phytochemical fingerprinting using High Performance Thin Layer chromatography (HPTLC). The extracts were spotted on pre-coated Silica gel G60 F254 TLC plates (Merck, Germany) along with the reference standard viz., 1' acetoxychavicol acetate (Natural Remedies, Bangalore, India) using Linomat V Automatic Sample Spotter (CAMAG, Switzerland), run in a 'twin trough TLC chamber', dried and visualized in 'CAMAG TLC visualizer' pre and post derivatization with anisaldehyde-sulphuric acid. The mobile phase used was Toluene: Acetone (7:3).

Bacterial culture

The reference *M.tb* laboratory strain H37Rv, susceptible to the first line drugs, along with three drug susceptible and three multi drug resistant clinical isolates [3] were used for MABA and intracellular assay. The details of the isolates used for the study are presented in Table 1.

MABA

The assay was performed as reported by Collins and Franzblau [19] and Webster et al. [20]. Briefly, 100 μ l of 0.5×10^6 /ml of the *M.tb* strains (Viable *M.tb*, VMTB) were cultured in 7H9 medium (supplemented with ADC and 0.5% glycerol) in the presence of the plant extracts

Table 1 Characteristics of strains used for testing the antimycobacterial activity of *A. galanga*

Sr. no	Strain ID	Drug susceptibility profile*	<i>rpoB</i> ^u genotype	<i>katG</i> ^u genotype	<i>inhA</i> promoter genotype
1	H37Rv	Susceptible	Wild type	Wild type	Wild type
2	S1	Susceptible	Wild type	Wild type	Wild type
3	S2	Susceptible	Wild type	Wild type	Wild type
4	S3	Susceptible	Wild type	Wild type	Wild type
5	R1	Resistant to HR	D516V mixed	S315T1/T2	A16G mixed
6	R2	Resistant to HERZ	D516V mixed	S315T1/T2	A16G mixed
7	R3	Resistant to HERZ	S531L	S315T1/T2 mixed	Wild type

Antimycobacterial activity of *A. galanga* under anaerobic conditions was tested using only H37Rv.

H-isoniazid, E-Ethambutol, R-Rifampicin, Z-Pyrazinamide.

S- Drug susceptible strain.

R- Drug resistant strain.

*Phenotypic drug resistance was ascertained using the BACTEC MGIT 960 system.

^uGenotypic drug resistance was ascertained using the GenoType MTBDRplus assay (Hain Lifescience, Germany). Mixed indicates heteroresistance (presence of wild type and mutant bands).

(1, 10, 25, 50 and 100 µg/ml) in a Nunc™ flat bottom 96 well plate (Nunclon, Denmark). The controls maintained for all the tested strains included: medium, DMSO (at a volume that is used for the highest concentration of plant extract), 1:100 VMTB and 2 µg/ml Rifampicin (RIF) (Sigma-Aldrich, USA). To check the interaction of the plant extracts with Alamar Blue, additionally wells with plant extracts and media were also maintained. The plates were incubated at 37°C for seven days. Post incubation, 10 µl of Alamar Blue dye (Invitrogen, USA) [5% (v/v)] diluted 1:1 in 7H9 medium (supplemented with ADC and 0.5% glycerol) was added and the plates were reincubated for 30 hours. The Optical Density (O.D.) of the wells was measured at 600 nm and 570 nm in an ELISA reader (Thermo Fisher Scientific, USA), and the percent reduction of Alamar Blue dye was calculated as per the manufacturer's instructions. Use of percent reduction to screen plant extracts allowed identification of those extracts with marginal activity (not resulting in 99% kill). Triplicate wells were maintained for each variable in every assay and all the assays were performed thrice and the data was analyzed as Mean ± SD.

The results were interpreted based on the percent reduction of the dye which is directly proportional to the bacterial growth. The extracts were considered to be active if the percent reduction value of Alamar Blue dye was less than that observed for the 1:100 VMTB control [21].

Internal Quality Control was performed by comparing the results of MABA to the Bactec MGIT960 system (BD, USA). As the aqueous extract was found to be ineffective, only acetone and ethanolic extracts of *A. galanga* were tested against H37Rv and the six clinical isolates.

Intracellular assay

The human lung carcinoma epithelial cell line, A549 (NCCS, Pune, India), was grown in DMEM (GibcoBRL, UK) supplemented with 10% fetal calf serum (FCS) and

4 µg/ml of gentamycin. 10⁶ cells/well were seeded in a 96 well plate and were infected with H37Rv, drug susceptible and drug resistant strains at a multiplicity of infection (MOI) of 1:1 for 6 hrs. Post infection, the cells were treated with amikacin [22] (standardized to 50 µg/ml) for 2 hrs to kill the remaining extracellular bacteria. The excess amikacin was washed off and the infected cells were incubated with the plant extracts at a concentration of 25 µg/ml and 100 µg/ml overnight in DMEM with 5% FCS. On the following day the plant extracts were washed off and the cells maintained in DMEM with 3% FCS. The gradual reduction in FCS concentration ensured that the cell line did not over grow. On 0, 3rd, 5th, 7th and 10th day, post infection, the cells were lysed with 0.1% sodium dodecyl sulphate (SDS) to release the intracellular bacteria. The lysate was ten fold serially diluted with PBS and 10 µl of the two highest dilutions were spotted onto Middlebrook 7H11 (MB7H11) agar plates supplemented with OADC (Becton Dickinson, USA) and 0.5% glycerol. The plates were incubated at 37°C for three weeks and the Colony Forming Units (CFUs) enumerated.

Double stimulus

The intracellular assays were repeated using the above mentioned protocol with the following modification. The infected cells were given a second stimulus of the plant extracts (25 µg/ml) on the fifth day post infection. This was done to evaluate if a double stimulus of the plant extracts would augment the intracellular killing of the bacteria.

The inhibition of bacterial growth was represented as percent inhibition calculated using the following formula:

$$\% \text{ inhibition} = \left(\frac{\text{((growth under control conditions)} - \text{growth under experimental conditions})}{\text{growth under control conditions}} \right) * 100$$

Axenic assay under differential oxygen concentration

The assay was carried out using only the reference M.tb laboratory strain H37Rv, susceptible to the first line drugs.

Ten ml per tube of Middlebrook 7H9 broth, supplemented with ADC and 0.5% glycerol, was aliquoted and bacterial suspension containing 10^4 CFU/ml was inoculated into the tubes. Since significant intracellular activity was observed with higher concentration of plant extracts, 100 μ g/ml of plant extract was used as the final concentration per tube. Positive and negative growth controls along with a rifampicin (1 μ g/ml) control were maintained. The above set up in triplicate was subjected to differentially reducing oxygen concentration viz., aerobic, microaerophilic and anaerobic conditions. The microaerophilic conditions were obtained using the candle jar method [23]. An anaerobic jar with a gas pack (HiMedia, India) was used to create anaerobic conditions. The change in colour of the indicator tablets, provided by the manufacturer, from pink to purple was indicative of anaerobic conditions. To ensure that the bacterium had completed sufficient number of replication cycles, the sets were incubated for a period of 10 days. Post incubation each of the tubes were vortex mixed, serially diluted tenfold and 10 μ l of this dilution was spotted on MB7H11 agar plate supplemented with OADC and 0.5% glycerol to enumerate the CFUs.

Results

Phytochemical fingerprinting

The chromatogram of the HPTLC fingerprinting of the three extracts scanned at 366 nm post derivatization with anisaldehyde – sulphuric acid has been presented in Figure 1. As can be seen from this Figure 1' acetochavicol acetate, the reference standard used, was found to be present in all the extracts with an R_f value of 0.67.

MABA

The antibiotic susceptibility profile of the isolates performed using MABA was in concordance with the MGIT960 assay.

It was observed that the lower concentrations (1 and 10 μ g/ml) of the three *A. galanga* extracts (acetone, aqueous and ethanolic) did not exhibit any antibacterial activity. However significant activity was observed at the higher concentrations (25, 50 and 100 μ g/ml). The acetone and ethanolic extracts were found to be the most effective against all the isolates (Table 2) unlike the aqueous extract which did not show any significant activity. The higher concentration (100 μ g/ml) of the extracts showed increased inhibition of all the strains.

The acetone and ethanolic extract of *A. galanga* were also tested against H37Rv and the clinical isolates in the

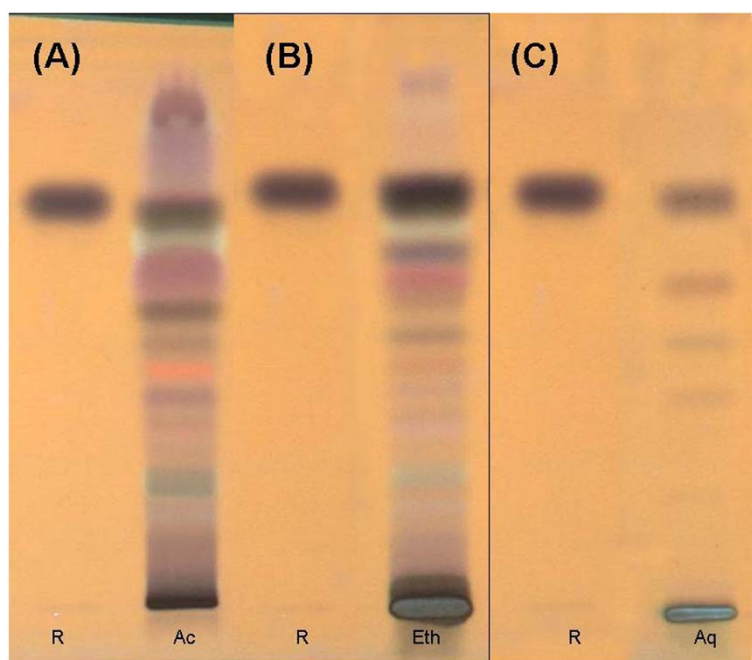


Figure 1 HPTLC fingerprinting of the extracts of *Alpinia galanga*. Profile of acetone extract (A); ethanolic extract (B); aqueous extract (C); scanned at 366 nm post derivatization with anisaldehyde – sulphuric acid. R – Reference compound 1' acetochavicol acetate, Ac – Acetone extract, Eth – Ethanolic extract, Aq – Aqueous extract.

Table 2 Antimycobacterial activity of different extracts of *A. galanga* using microplate alamar blue assay

Strains	1: 100 VMTB	VMTB	<i>A. galanga</i> extracts					
			Acetone (µg/ml)			Ethanollic (µg/ml)		
			25	50	100	25	50	100
% reduction of Alamar Blue dye								
H37Rv	21.71 ± 2.84	66.05 ± 5.03	56.76 ± 9.51	25.10 ± 11.15	18.51 ± 3.84	57.27 ± 6.11	14.13 ± 6.46	12.88 ± 7.10
S1	21.09 ± 3.42	56.27 ± 2.30	53.84 ± 2.47	48.93 ± 11.10	21.16 ± 6.22	47.75 ± 13.04	35.60 ± 2.62	16.63 ± 4.40
S2	22.33 ± 7.00	59.17 ± 4.93	52.78 ± 6.74	42.90 ± 12.23	15.23 ± 6.17	41.45 ± 5.70	14.31 ± 6.64	14.87 ± 7.91
S3	19.83 ± 1.80	59.74 ± 10.58	55.58 ± 17.71	52.89 ± 16.92	18.21 ± 2.29	42.05 ± 6.60	32.15 ± 7.40	18.55 ± 4.40
R1	14.40 ± 5.71	51.08 ± 11.91	34.01 ± 6.32	25.57 ± 6.85	21.24 ± 5.62	23.39 ± 3.53	16.89 ± 1.10	13.08 ± 5.78
R2	22.11 ± 2.47	60.93 ± 9.00	53.38 ± 8.37	36.98 ± 8.84	20.04 ± 1.22	36.49 ± 4.06	19.74 ± 4.38	15.74 ± 3.86
R3	16.73 ± 4.14	50.50 ± 4.04	37.10 ± 5.03	30.48 ± 8.23	13.95 ± 2.06	42.59 ± 7.22	14.25 ± 3.88	12.25 ± 2.87

Values in bold indicate those parameters for which the percent reduction in plant extract containing wells was less than that for the 1:100 VMTB control.

MGIT960 system. The activity recorded was concordant with the MABA results.

Intracellular assays

The preliminary results of the intracellular assay performed at a concentration of 25 µg/ml showed that the aqueous extract was ineffective against all the strains tested. The acetone extract was the most efficacious with more than 80% inhibition against 5/7 isolates (Table 3). The ethanolic extract showed more than 80% inhibition against 4/7 isolates (Table 3).

Considering the significant activity demonstrated by the acetone and ethanolic extracts, the assay protocol was modified to introduce a second dose of plant extract at the same concentration on the fifth day post infection. Significant inhibition of bacterial growth was observed in all 7 strains after the double stimulus. Both the extracts also exhibited increased percent inhibition (≥ 90%) in the intracellular assays with the double stimulus (Table 3).

A higher concentration (100 µg/ml) of the plant extracts (acetone and ethanolic) was also tested and showed augmented bacterial kill in all 7 strains (Table 3).

Axenic assay under hypoxic conditions

The activity of the plant extracts was tested under reduced oxygen concentrations to mimic conditions for studying the effect of plant extracts on latent bacteria and to dissect the intracellular environment. Hence the assay was restricted to H37Rv only. Significant inhibition of the bacteria was observed with acetone and ethanolic extracts when compared to the 1:100 VMTB growth control (Figure 2).

Discussion

There has been no anti-TB drug introduced in the past 30 years and the rapid acquisition of drug resistance to the existing drugs necessitates development of new, effective and affordable anti-TB drugs [24]. Plant-derived antimycobacterial compounds belong to an exceptionally wide diversity of classes, including terpenoids, alkaloids, peptides, phenolics and coumarins. Hence medicinal plants remain an important resource to find new therapeutic agents [25]. The advantages of using antimicrobial compounds from medicinal plants include fewer side effects, better patient acceptance due to long history of

Table 3 Percent inhibition of bacterial growth using intracellular (A549) assays

Sr. no.	Strains	<i>A. galanga</i> extracts					
		Acetone (µg/ml)			Ethanolic (µg/ml)		
		25		100	25		100
		Single stimulus	Double stimulus		Single stimulus	Double stimulus	
1	H37Rv	78.25 ± 6.14	94.58 ± 2.98	98.06 ± 0.24	78.41 ± 5.00	98.06 ± 0.24	98.06 ± 0.24
2	S1	83.34 ± 7.76	99.42 ± 0.50	99.37 ± 0.05	86.20 ± 12.04	98.88 ± 1.92	99.37 ± 0.05
3	S2	75.62 ± 2.23	94.47 ± 3.88	99.21 ± 0.02	73.09 ± 3.41	98.86 ± 0.44	99.21 ± 0.02
4	S3	96.41 ± 0.76	97.69 ± 1.25	95.18 ± 1.51	83.11 ± 2.33	100 ± 0	95.20 ± 1.82
5	R1	86.70 ± 5.11	95.00 ± 4.69	94.60 ± 1.30	82.21 ± 12.17	90.89 ± 6.43	97.74 ± 1.11
6	R2	89.33 ± 2.67	98.00 ± 0.00	93.56 ± 2.48	85.33 ± 5.81	93.78 ± 0.20	99.08 ± 0.52
7	R3	91.11 ± 1.92	94.36 ± 2.67	100 ± 0	57.93 ± 8.36	100 ± 0	100 ± 0

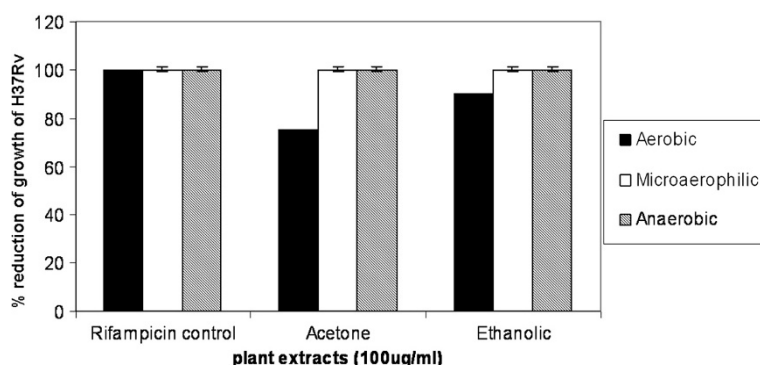


Figure 2 Effect of the *Alpinia galanga* extracts on H37Rv growth under hypoxic conditions. The figure represents percent reduction in growth of H37Rv by acetone and ethanolic extracts of *A. galanga* under reducing oxygen concentration. Rifampicin was used as a positive control for inhibition of growth.

use, reduced costs and cultivability rendering them renewable in nature [26].

A. galanga is a known wide spectrum antibacterial agent. Soundhari and Rajarajan [16] have reported the antimycobacterial activity of galangal against isoniazid resistant isolates at minimum inhibitory concentration (MIC) of 250 µg/ml. In our study, ethanolic extract of *A. galanga* was found to be bactericidal to M.tb under axenic aerobic conditions at 50-100 µg/ml. The variation in the active concentrations could be due to differences in the method of extraction and the assay used. The antimycobacterial activity of the essential oils from *A. galanga* has been reported since 1957 [27]. The phenolic components of the oils have been reported to act as membrane permeabilisers [28]. In addition, it has been suggested that low oxygen levels can enhance the activity of essential oils. Diminished oxygen supply leads to fewer oxidative changes in the essential oils and/or that cells obtaining energy via anaerobic metabolism are more sensitive to the toxic action of essential oils [28]. The enhanced activity of the extracts under anaerobic conditions could thus be attributed to this. The ability of the *A. galanga* extracts to remain active under hypoxic conditions could further be explored for the treatment of LTBI, where the bacteria are in a non-replicating and dormant state and remain unaffected by the conventional TB antibiotics.

Latha et al. [29] have demonstrated the plasmid curing based activity of crude acetone extract of *A. galanga*. The principal compound responsible for the activity was identified as 1' acetoxychavicol acetate. The activity of this compound offers new perspectives to control the replication and thus exhibits its potential to disrupt plasmid replication and re-sensitize bacteria to antibiotics. Though M.tb may not contain plasmids, it is possible that 1' acetoxychavicol acetate (also detected in the extracts used in the study) may act on the genome of M.tb to render the bacterium sensitive to antibiotics.

Antimicrobials from plants have been found to be enhancers in that though they may not have any antimicrobial properties alone, but when consumed in tandem with conventional drugs they may enhance the effect of that drug [30]. Studies on synergism between known antimicrobial agents and bioactive plant extracts have also been demonstrated [31-33].

The acetone and ethanolic extracts were found to show antimycobacterial activity under intracellular conditions. It appears that the *A. galanga* extracts are able to penetrate into the cells (A549) and act on the bacterium residing intracellularly, unlike the action of some antibiotics viz gentamycin which cannot penetrate the cells and exert their action [34].

Conclusions

In conclusion, the antimycobacterial activity of *A. galanga* observed under aerobic and anaerobic axenic conditions and in the intracellular assay system could be due to different phytoactive components acting with varied mode of action(s). Furthermore, in depth studies to determine the active component(s) could lead to potential formulations that serve not only as adjunct to current therapy but as options in emerging clinical drug resistance.

The use of *A. galanga* in diet and traditional medicines has been extensively reported, its regular intake within feasible limits could act as an adjunct to the ongoing conventional TB therapy. Additionally the promising activity of *A. galanga* under microaerophilic and anaerobic conditions could also be developed further as a treatment for latent infection in TB-endemic regions where more than one third of the population act as reservoirs of dormant/non replicating M.tb [35].

Although the results from the present study are indicative that *A. galanga* has promising antimycobacterial activity, studies using more isolates/strains of M.tb are needed.

Competing interest

The authors declare that they have no competing interests.

Authors' contributions

PG and PB have conducted the intracellular and axenic anaerobic assays, analyzed the results and drafted the manuscript. DD has conducted the MABA and edited the manuscript. MT has assisted in the MABA and edited the manuscript. PD has undertaken the phytochemistry of the plant extracts. PT has sourced, cultivated and authenticated the plant material. TB is responsible for the study. All authors read and approved the final manuscript.

Acknowledgement

The authors would like to acknowledge the contribution of the field staff for collection of samples. We are thankful to the patients for their consent to be a part of the study. The technical support of Mr. Dipen Desai for the intracellular assays is appreciated. We would also like to acknowledge the assistance of Anchrom Enterprises (India) Private Limited, Mumbai, for the phytochemical analysis.

Source of funding

The present study was supported by a Department of Biotechnology, Government of India, Virtual Center of Excellence Grant no.: BT/01/COE/05/06/01.

Author details

¹The Foundation for Medical Research, 84-A, R.G. Thadani Marg, Worli, Mumbai 400018, Maharashtra, India. ²Naoroji Godrej Centre for Plant Research, Lawkim Motors Group Campus, Shindewadi, Shirwal, Satara, Maharashtra 412801, India.

Received: 19 November 2013 Accepted: 24 February 2014

Published: 4 March 2014

References

1. *Tuberculosis* 2007. 1st edition. 2007. <http://tuberculosis-textbook.com/index.htm>.
2. Udhwadia ZF, Amale RA, Ajbani KK, Rodrigues C: **Totally drug-resistant tuberculosis in India.** *Clin Infect Dis* 2011, **54**(4):579–581.
3. Dsouza DTB, Mistry NF, Vira TS, Dholakia Y, Hoffner S, Pasvol G, Nicol M, Wilkinson RJ: **High levels of multidrug resistant tuberculosis in new and treatment-failure patients from the revised National tuberculosis control programme in an urban metropolis (Mumbai) in Western India.** *BMC Public Health* 2009, **9**(1):211.
4. Habbal OA, Al-Jabri AA, El-Hag AH, Al-Mahrooqi ZH, Al-Hashmi NA: **In-vitro antimicrobial activity of *Lawsonia inermis* Linn (henna). A pilot study on the Omani henna.** *Saudi Med J* 2005, **26**(1):69–72.
5. Chanda S, Dudhatra S, Kaneria M: **Antioxidative and antibacterial effects of seeds and fruit rind of nutraceutical plants belonging to the Fabaceae family.** *Food Funct* 2010, **1**(3):308–315.
6. Mohamad S, Zin NM, Wahab HA, Ibrahim P, Sulaiman SF, Zahariluddin AS, Noor SS: **Antituberculosis potential of some ethnobotanically selected Malaysian plants.** *J Ethnopharmacol* 2011, **133**(3):1021–1026.
7. Chen JJ, Lin WJ, Shieh PC, Chen IS, Peng CF, Sung PJ: **A new long-chain alkene and antituberculosis constituents from the leaves of *Pourthiaea lucida*.** *Chem Biodivers* 2010, **7**(3):717–721.
8. Negi AS, Kumar JK, Luqman S, Saikia D, Khanuja SP: **Antitubercular potential of plants: a brief account of some important molecules.** *Med Res Rev* 2010, **30**(4):603–645.
9. Askun T, Tumen G, Satil F, Ates M: **In vitro activity of methanol extracts of plants used as spices against *Mycobacterium tuberculosis* and other bacteria.** *Food Chem* 2009, **116**(1):289–294.
10. Jimenez-Arellanes A, Meckes M, Torres J, Luna-Herrera J: **Antimycobacterial triterpenoids from *Lantana hispida* (Verbenaceae).** *J Ethnopharmacol* 2007, **111**(2):202–205.
11. Kaushik D, Yadav J, Kaushik P, Sacher D, Rani R: **Current pharmacological and phytochemical studies of the plant *Alpinia galanga*.** *Zhong Xi Yi Jie He Xue Bao* 2011, **9**(10):1061–1065.
12. Chudihal AK, Jain DP, Somani RS: ***Alpinia galanga* Willd.- An overview on phyto-pharmacological properties.** *J Nat Prod Resour* 2010, **1**(2):143–149.
13. Sawangaroen N, Subhadhirasakul S, Phongpaichit S, Siripanth C, Jamjaroen K, Sawangaroen K: **The *in vitro* anti-giardial activity of extracts from plants that are used for self-medication by AIDS patients in southern Thailand.** *Parasitol Res* 2005, **95**(1):17–21.
14. Phongpaichit S, Uddhakul V, Subhadhirasakul S, Wattanapiromsakul C: **Evaluation of the antimycobacterial activity of extracts from plants used as self-medication by AIDS patients in Thailand.** *Pharm Biol* 2006, **44**(1):71–75.
15. Palittapongpim P, Kirdmanee C, Kittakoo P, Rukseree, K: **US Pat 2002/0192262 A1, (National Science and Technology Development Agency, Prathumthani), Dec.19.** *Chem Abstr*, **138**:11394a.
16. Soundhari C, Rajarajan S: **In vitro screening of lyophilised extracts of *Alpinia galanga* L. and *Oldenlandia umbellata* L. for antimycobacterial activity.** *Int J Bio Pharma Res* 2013, **4**(6):427–432.
17. Waddell SJ, Laing K, Senner C, Butcher PD: **Microarray analysis of defined *Mycobacterium tuberculosis* populations using RNA amplification strategies.** *BMC Genomics* 2008, **9**(1):94.
18. Giridharan P, Somasundaram ST, Perumal K, Vishwakarma RA, Karthikeyan NP, Velmurugan R, Balakrishnan A: **Novel substituted methylenedioxy lignan suppresses proliferation of cancer cells by inhibiting telomerase and activation of c-myc and caspases leading to apoptosis.** *Br J Cancer* 2002, **87**(1):98–105.
19. Collins L, Franzblau SG: **Microplate alamar blue assay versus BACTEC 460 system for high-throughput screening of compounds against *Mycobacterium tuberculosis* and *Mycobacterium avium*.** *Antimicrob Agents Chemother* 1997, **41**(5):1004–1009.
20. Webster D, Lee TD, Moore J, Manning T, Kunimoto D, LeBlanc D, Johnson JA, Gray CA: **Antimycobacterial screening of traditional medicinal plants using the microplate resazurin assay.** *Can J Microbiol* 2010, **56**(6):487–494.
21. Woods GL, Brown-Elliott B, Pfyffer GE, Ridderhof JC, Conville P, Desmond EP, Hall GS, Siddiqi SH, Wallace RJ, Warren NG, Lin G, Witebsky FG: **Susceptibility testing of *Mycobacteria*, *Nocardiae* and other Aerobic Actinomycetes; Approved Standard.** 2nd edition. Pennsylvania: Clinical and Laboratory Standards Institute; 2011.
22. Bermudez LE, Goodman J: ***Mycobacterium tuberculosis* invades and replicates within type II alveolar cells.** *Infect Immun* 1996, **64**(4):1400–1406.
23. Ehrlich TP, Schwartz RH, Wientzen R, Thorne MM: **Comparison of an immunochromatographic method for rapid identification of group A streptococcal antigen with culture method.** *Arch Fam Med* 1993, **2**(8):866–869.
24. Gautam R, Saklani A, Jachak SM: **Indian medicinal plants as a source of antimycobacterial agents.** *J Ethnopharmacol* 2007, **110**(2):200–234.
25. Mmushi T, Masoko P, Mdee L, Mokgotho M, Mampuru L, Howard R: **Antimycobacterial evaluation of fifteen medicinal plants in South Africa.** *Afr J Tradit Complement Altern Med* 2010, **7**(1):34–39.
26. Gur S, Turgut-Balik D, Gur N: **Antimicrobial activities and some fatty acids of turmeric, ginger root and linseed used in the treatment of infectious diseases.** *J Agr Sci* 2006, **2**:4.
27. Chopra LC, Khajuria BN, Chopra CL: **Antibacterial properties of volatile principles from *Alpinia galanga* and *Acorus calamus*.** *Antibiot Chemother* 1957, **7**:6.
28. Burt S: **Essential oils: their antibacterial properties and potential applications in foods—a review.** *Int J Food Microbiol* 2004, **94**(3):223–253.
29. Latha C, Shirram VD, Jahagirdar SS, Dhakephalkar PK, Rojatar SR: **Antiplasmodial activity of 1'-acetoxychavicol acetate from *Alpinia galanga* against multi-drug resistant bacteria.** *J Ethnopharmacol* 2009, **123**(3):522–525.
30. Kamatou GPP, Van Zyl RL, Van Vuuren SF, Viljoen AM, Figueiredo AC, Barroso JG, Pedro LG, Tilney PM: **Chemical composition, leaf trichome types and biological activities of the essential oils of four related *Salvia* Species indigenous to Southern Africa.** *J Essent Oil Res* 2006, **18**:8.
31. Toroglu S: **In-vitro antimicrobial activity and synergistic/antagonistic effect of interactions between antibiotics and some spice essential oils.** *J Environ Biol* 2011, **32**(1):23–29.
32. Adikwu M, Jackson C, Esimone C: **Evaluation of *in vitro* antimicrobial effect of combinations of erythromycin and *Euphorbia hirta* leaf extract against *Staphylococcus aureus*.** *Res Pharm Biotechnol* 2010, **2**:3.
33. Adwan G, Abu-Shanab B, Adwan K: **Antibacterial activities of some plant extracts alone and in combination with different antimicrobials against**

multidrug-resistant *Pseudomonas aeruginosa* strains. *Asian Pac J Trop Med* 2010, **1**:4.

34. Wilkinson SM, Uhl JR, Kline BC, Cockerill FR: **Assessment of invasion frequencies of cultured HEp-2 cells by clinical isolates of *Helicobacter pylori* using an acridine orange assay.** *J Clin Pathol* 1998, **51**:7.
35. Young DB, Gideon HP, Wilkinson RJ: **Eliminating latent tuberculosis.** *Trends Microbiol* 2009, **17**(5):183–188.

doi:10.1186/1472-6882-14-84

Cite this article as: Gupta et al.: Evaluating the anti *Mycobacterium tuberculosis* activity of *Alpinia galanga* (L.) Willd. axenically under reducing oxygen conditions and in intracellular assays. *BMC Complementary and Alternative Medicine* 2014 **14**:84.

**Submit your next manuscript to BioMed Central
and take full advantage of:**

- Convenient online submission
- Thorough peer review
- No space constraints or color figure charges
- Immediate publication on acceptance
- Inclusion in PubMed, CAS, Scopus and Google Scholar
- Research which is freely available for redistribution

Submit your manuscript at
www.biomedcentral.com/submit

